

From C-Reactive Protein to Interleukin-6 to Interleukin-1 Moving Upstream To Identify Novel Targets for Atheroprotection

Paul M Ridker

Abstract: Plasma levels of the inflammatory biomarker high-sensitivity C-reactive protein (hsCRP) predict vascular risk with an effect estimate as large as that of total or high-density lipoprotein cholesterol. Further, randomized trial data addressing hsCRP have been central to understanding the anti-inflammatory effects of statin therapy and have consistently demonstrated on-treatment hsCRP levels to be as powerful a predictor of residual cardiovascular risk as on-treatment levels of low-density lipoprotein cholesterol. Yet, although hsCRP is clinically useful as a biomarker for risk prediction, most mechanistic studies suggest that CRP itself is unlikely to be a target for intervention. Moving upstream in the inflammatory cascade from CRP to interleukin (IL)-6 to IL-1 provides novel therapeutic opportunities for atheroprotection that focus on the central IL-6 signaling system and ultimately on inhibition of the IL-1 β -producing NOD-like receptor family pyrin domain containing 3 inflammasome. Cholesterol crystals, neutrophil extracellular traps, atheroprone flow, and local tissue hypoxia activate the NOD-like receptor family pyrin domain containing 3 inflammasome. As such, a unifying concept of hsCRP as a downstream surrogate biomarker for upstream IL-1 β activity has emerged. From a therapeutic perspective, small ischemia studies show reductions in acute-phase hsCRP production with the IL-1 receptor antagonist anakinra and the IL-6 receptor blocker tocilizumab. A phase IIb study conducted among diabetic patients at high vascular risk indicates that canakinumab, a human monoclonal antibody that targets IL-1 β , markedly reduces plasma levels of IL-6, hsCRP, and fibrinogen with little change in atherogenic lipids. Canakinumab is now being tested as a method to prevent recurrent cardiovascular events in a randomized trial of 10 065 post-myocardial infarction patients with elevated hsCRP that is fully enrolled and due to complete in 2017. Clinical trials using alternative anti-inflammatory agents active against the CRP/IL-6/IL-1 axis, including low-dose methotrexate and colchicine, are being explored. If successful, these trials will close the loop on the inflammatory hypothesis of atherosclerosis and serve as examples of how fundamental biologic principles can be translated into personalized medical practice. (*Circ Res.* 2016;118:145-156. DOI: 10.1161/CIRCRESAHA.115.306656.)

Key Words: atherosclerosis ■ clinical trials ■ cytokines ■ inflammation ■ prevention

Vascular inflammation plays important roles in plaque initiation, progression, and the process of sudden fibrous cap rupture that triggers local thrombosis and onset of hypoxia-related myocardial damage.¹ Recent evidence suggests that a wide array of cell types in the monocyte and macrophage lines are involved in atherothrombosis, as are specific cytokines, chemokines, and adhesion molecules that relate to vascular function.² Yet, despite accumulating evidence, interest in moving beyond low-density lipoprotein (LDL) cholesterol (LDLC) to target the inflammatory process itself has only recently garnered significant investigative support.³ Part of this hesitation relates to the fact that the clinical expression of the inflammation hypothesis of atherothrombosis has relied on assays for high-sensitivity C-reactive protein (hsCRP) as a biomarker of vascular risk. Although hsCRP is clinically proven as a method

to predict vascular risk and to enhance event rates in clinical trials, C-reactive protein (CRP) itself is unlikely to provide an effective target for intervention. Thus, clinical investigation has sequentially moved upstream, first to interleukin-6 (IL-6) and then to interleukin-1 (IL-1), seeking more promising targets for anti-inflammatory atheroprotection. On the basis of robust pathophysiologic, genetic, and phase II trial data, large-scale outcome trials directly targeting the central IL-6 signaling pathway, as well as the upstream IL-1 β -producing NOD-like receptor family pyrin domain containing 3 (NLRP3) inflammasome, are underway. In this review, epidemiologic, genetic, experimental, and clinical evidence supporting this upstream movement from CRP to IL-6 to IL-1 are described, as is the unifying concept of hsCRP as a downstream biomarker for IL-1 β activity.

Original received September 7, 2015; revision received September 30, 2015; accepted October 1, 2015.

From the Center for Cardiovascular Disease Prevention, Department of Medicine, Brigham and Women's Hospital, Harvard Medical School, Boston, MA. This manuscript was sent to James Willerson, Consulting Editor, for review by expert referees, editorial decision, and final disposition.

Correspondence to Paul M Ridker, MD, MPH, Center for Cardiovascular Disease Prevention, Department of Medicine, Brigham and Women's Hospital, 900 Commonwealth Ave, Boston, MA 02215. E-mail pridker@partners.org

© 2016 American Heart Association, Inc.

Circulation Research is available at <http://circres.ahajournals.org>

DOI: 10.1161/CIRCRESAHA.115.306656

Nonstandard Abbreviations and Acronyms

AFCAPS/TexCAPS	Airforce/Texas Coronary Atherosclerosis Prevention Study
CANTOS	Canakinumab Anti-Inflammatory Thrombosis Outcomes Study
CARE	Cholesterol and Recurrent Events
CRP	C-reactive protein
hsCRP	high-sensitivity C-reactive protein
IL-1	interleukin 1
IL-6	interleukin 6
IL-1Ra	interleukin 1 receptor antagonist
JUPITER	Justification for Use of statins in Prevention: an Intervention Trial Evaluating Rosuvastatin
LDL	low-density lipoprotein
LDLC	low-density lipoprotein cholesterol
NLRP3	NOD-like receptor family pyrin domain containing 3
PHS	Physicians Health Study

Evidence for CRP: Strong Positive Associations With Atherothrombotic Disease in Primary and Secondary Prevention, Neutral Data for Causality

CRP is a nonglycosylated circulating pentraxin composed of 5 identical subunits arranged with pentameric symmetry. First described by Tillett and Francis in 1930 at the Rockefeller University, the concept of CRP functioning as an acute phase reactant was developed by Macleod, Avery and McCarty in the 1940s.^{4–6} By the 1980s, work by Kushner, Pepys, and others had established that the bulk of circulating CRP was produced by hepatocytes under regulatory control from circulating cytokines, in particular IL-6.⁷ With a circulating half-life of ≈ 19 hours, the plasma concentration of CRP is largely determined by synthetic rate.

Although a few case reports from the 1950s suggested elevated levels of CRP following acute myocardial infarction, cardiovascular interest in CRP re-emerged in the 1990s with reports from several groups describing increased CRP among those with ongoing ischemia, unstable angina, and chronic atherosclerotic disease.^{8–11} However, because CRP levels increase after a variety of inflammatory stimuli (including myocardial ischemia), these important studies could not address whether CRP elevations preceded the onset of vascular disease. That controversial issue was settled by data from the prospective Physicians Health Study (PHS) which, in 1997, published evidence demonstrating that levels of CRP measured with a high-sensitivity assay were elevated decades before first ever acute ischemic events¹² (Figure 1). This study also demonstrated that those at future risk for vascular events had stable elevations of hsCRP over long periods of time; that the anti-inflammatory agent aspirin was significantly more effective in preventing first ever heart attacks when taken by those with elevated levels of hsCRP; and that effects were additive to that of total and high-density lipoprotein cholesterol but limited to arterial atherosclerotic events (including peripheral arterial disease, stroke, and sudden cardiac death) but not deep vein thrombosis.^{13,14} It is important in retrospect to recognize that the PHS did not indicate that CRP itself was causal

for atherosclerosis because other inflammatory biomarkers measured in that study, including sICAM-1 (soluble intercellular adhesion molecule type-1), IL-6, and fibrinogen, also predicted future vascular risk, as did the alternative inflammatory pentraxin serum amyloid A. These data were, however, consistent with early observations of thermal heterogeneity in rupture-prone plaques and, hence, contributed to the emerging concepts that both local and systemic inflammation were relevant for acute infarction.¹⁵

The prospective PHS data in apparently healthy men was rapidly replicated in apparently healthy women.¹⁶ Then, with the availability of standardized commercial assays for hsCRP, >50 prospective cohorts worldwide would perform critical replications in multiple varied patient groups. By 2010, these data had been carefully brought together in a meta-analysis conducted by the Emerging Risk Factor Consortium. In that overview encompassing >160 000 individuals with 1.3 million person-years of follow-up, each standard deviation increase in log-normalized hsCRP associated with a multivariate adjusted relative increase in risk of 1.37 for future coronary heart disease (95% confidence interval 1.27–1.48) and 1.55 (95% confidence interval 1.37–1.76) for future cardiovascular mortality.¹⁷ Importantly, the magnitude of effect for hsCRP was at least as large as that for total cholesterol, high-density lipoprotein cholesterol, and blood pressure (Figure 2). The effects of hsCRP on vascular risk are linear across a broad range of values. Levels of hsCRP <1, 1 to 3, and >3 mg/L connote lower, average, and higher relative vascular risk in the context of other traditional risk factors.

Many clinicians elect to use the hsCRP containing Reynolds Risk Score (www.reynoldsriskscore.org) in daily practice because this global risk algorithm consistently outperforms those based on traditional Framingham covariates.¹⁸ In a direct head-to-head comparison of risk scores, including the new American College of Cardiology/American Heart Association pooled cohort model that was performed within the prospective Multi-Ethnic Study of Atherosclerosis (MESA), the Reynolds Risk Score had the largest C-statistic (indicating superior discrimination) and the best match between predicted and observed event rates (indicating superior calibration).¹⁹

Were hsCRP only a risk marker for atherothrombosis, it is unlikely that clinical guidelines worldwide would come to endorse its use in intermediate risk populations. That acceptance derived from further evidence that there was a specific therapy—statins—that could be recommended to those with elevated hsCRP even when LDLC levels were already low. The hypothesis underlying that claim came from initial observations in the Cholesterol and Recurrent Events (CARE) trial, indicating that statins lowered hsCRP in an LDL-independent manner and that the relative risk reductions attributable to statin therapy were greater among those with elevated hsCRP.²⁰ This observation, subsequently corroborated in the Airforce/Texas Coronary Atherosclerosis Prevention Study (AFCAPS/TexCAPS), Reversal of Atherosclerosis with Aggressive Lipid Lowering (REVERSAL), Pravastatin or Atorvastatin Evaluation and Infection Therapy (PROVE IT), and A to Z trials,^{21–24} led to the clinical concept of dual goals for statin therapy in which greatest clinical benefits were seen for those who not only reduced LDL

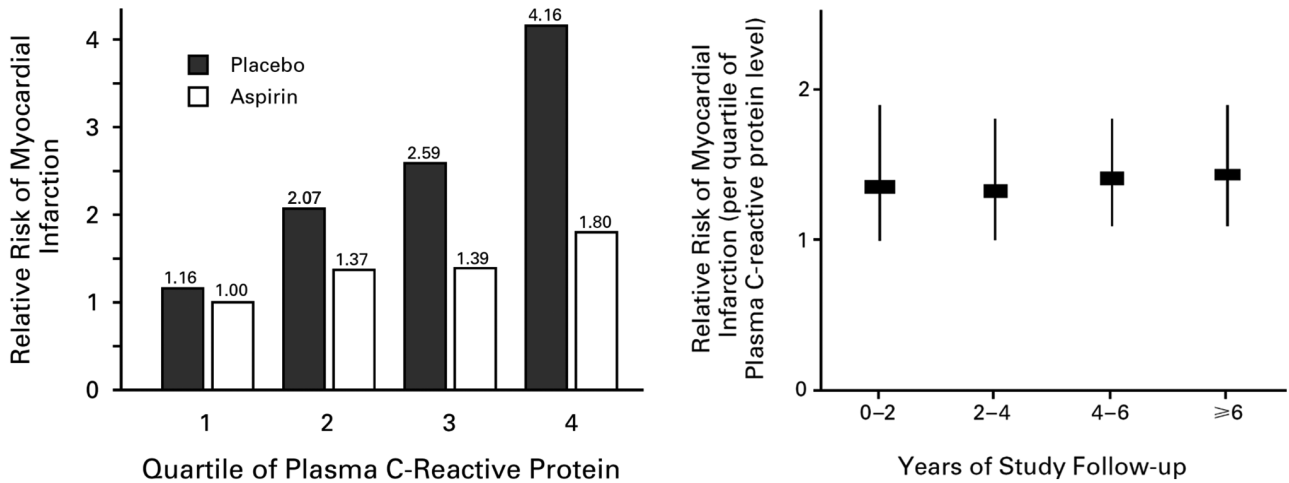


Figure 1. Left, Relationship of baseline plasma levels of high-sensitivity C-reactive protein (hsCRP) to risks of future myocardial infarction, stroke, and cardiovascular death in the prospective Physicians' Health Study among those randomly allocated to aspirin or placebo. Right, Risk estimates associated with elevated hsCRP levels are stable over long periods of time. Adapted from Ridker et al¹² with permission of the publisher. Copyright ©1997, the Massachusetts Medical Society.

below 70 mg/dL but who also reduced hsCRP below 2 mg/L.²⁵ Recent analyses from the Improved Reduction of Outcomes: Vytarin Efficacy International Trial (IMPROVE-IT) reiterate the fact that on-treatment hsCRP levels are as important a predictor of recurrent events as on-treatment levels of LDLC.²⁶

Ultimately, the 18000 patient Justification for Use of statins in Prevention: an Intervention Trial Evaluating Rosuvastatin (JUPITER) primary prevention trial would show that rosuvastatin 20 mg reduces by half the rate of first ever heart attack and stroke among those with initially low levels of LDLC but elevated levels of hsCRP.²⁷ As in earlier studies, on-treatment levels of hsCRP in JUPITER proved to be as important for predicting recurrent disease as were on treatment levels of LDLC, and the magnitude of initial hsCRP elevation was directly related to the magnitude of efficacy attributable to statin initiation.²⁸ Because those in JUPITER started with low levels of LDLC, JUPITER also provided the first evidence from a major contemporary trial that on-treatment levels of LDLC below 25 to 30 mg/dL was likely to be safe, critical

data for the development of PCSK9 (proprotein convertase subtilisin/kexin type 9) inhibitors.

Although the above data established hsCRP as a powerful risk biomarker for first and recurrent events, they do not establish CRP as a causal agent for atherothrombosis. CRP is predominantly produced in the liver as a primary acute phase reactant and plays a role in complement activation and in innate immune function. CRP can also be produced by inflammatory cells in localized inflammation, albeit at concentrations less likely to have systemic effects. For example, beyond hepatic production, inflammatory cytokines have been shown to stimulate CRP production in human coronary artery smooth muscle cells and in human adipocytes.^{29,30} In other work, CRP has been found to have direct proinflammatory and prothrombotic effects on human endothelial cells,³¹ partially through increases in plasminogen activator inhibitor expression and decreased prostacyclin release.³²⁻³⁴ Increased thrombosis after arterial injury has also been reported in human CRP transgenic mice³⁵ which, when crossed with apolipoprotein-E-deficient

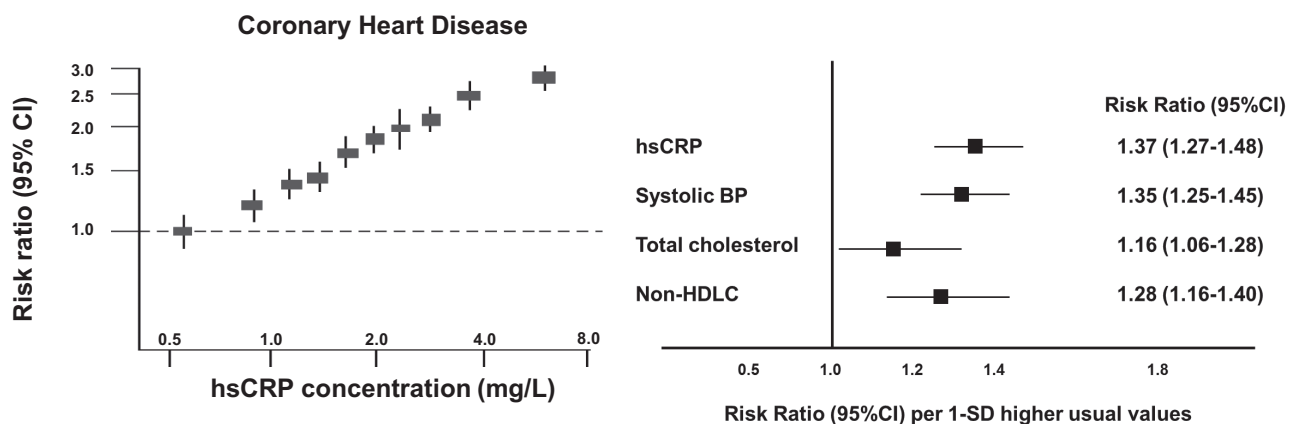


Figure 2. Left, Meta-analysis of the relationship of high-sensitivity C-reactive protein (hsCRP) levels in healthy individuals to future risks of coronary heart disease. Right, The magnitude of cardiovascular risk associated with a 1 SD change in hsCRP is at least as large as that associated with a similar change in systolic blood pressure (BP), total cholesterol, or non-high-density lipoprotein cholesterol (HDL). Adapted from Kaptoge et al.¹⁷

mice, resulted in strains with accelerated aortic atherosclerosis.³⁶ Other mouse studies, however, did not find evidence of a role for CRP in atherosclerotic development.^{37,38} Further, some human infusion studies suggesting more direct effects on atherothrombotic pathways are difficult to interpret because of possible contamination of early CRP preparations with bacterial lipopolysaccharide.^{39,40} In complementary recent studies from my group (using an anti-sense oligonucleotide targeted to CRP production)⁴¹ and from Mark Pepys' group (using pharmaceutical grade CRP infusions),⁴² no upstream effects on systemic inflammation were observed in direct response to alterations in CRP production. These neutral data for causality are consistent with population-based Mendelian randomization genetic studies which have confirmed the clinical utility of hsCRP as a biomarker, but did not support direct causation.^{43,44}

Ongoing controversy regarding causal roles for CRP do not diminish the clinical utility of hsCRP as a diagnostic test in primary and secondary prevention, an issue that has recently been reviewed elsewhere.⁴⁵ hsCRP has also proven effective as an enrichment criterion for secondary prevention trials seeking to enhance vascular risk. Current guidelines in the United States, Europe, and Canada endorse hsCRP ascertainment for those at intermediate risk or where there is uncertainty about the utility of statin therapy.

Moving Partially Upstream to IL-6: Positive Associations With Disease and Partial Links to Causality

If CRP is a downstream biomarker for atherothrombosis, what do comparable data for the upstream secondary messenger cytokine IL-6 show? First, like hsCRP, IL-6 levels measured in apparently healthy populations also predict future vascular risk; this observation was initially made in men in 2000,⁴⁶ confirmed in women,¹⁶ and subsequently reproduced in >25 prospective epidemiologic cohorts worldwide. Second, also in parallel with hsCRP, meta-analysis performed by the Emerging Risk Factors Collaboration would eventually demonstrate that for each SD increase in log IL-6, there is a 25% increase in risk of future vascular events (relative risk 1.25, 95% confidence interval 1.19–1.32; Figure 3).⁴⁷ Third, like hsCRP, IL-6 levels have been shown to correlate with endothelial dysfunction, arterial stiffness, and extent of subclinical atherosclerosis and are similarly predictive of incident type 2 diabetes mellitus.^{48–51} There is no clinically approved assay for IL-6, however, and measurement in clinical settings is more difficult than for hsCRP because of issues of circadian variation, short half-life, post-prandial effects, and assay stability.

Where IL-6 differs substantively from CRP are in its links to causal pathways related to atherothrombosis. Although IL-6 is the primary cytokine leading to hepatic CRP production,

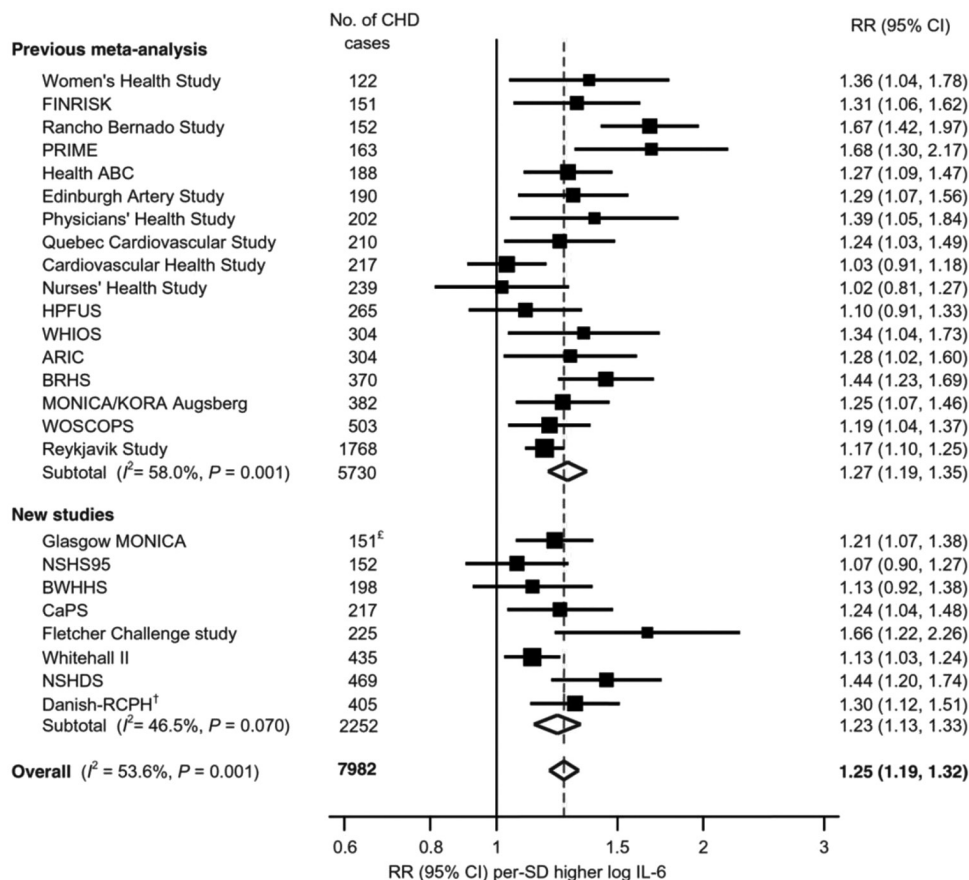


Figure 3. Relationship of plasma levels of interleukin-6 (IL-6) to future risks of cardiovascular disease in 25 prospective epidemiologic cohorts. Overall, for each SD increase in log IL-6, there is a 25% increase in risk of future vascular events (95% confidence interval [CI] 1.19–1.32). Adapted from Kaptoge et al⁴⁷ with permission of the publisher. Copyright ©2014, Oxford University Press.

upstream IL-6 signaling has also been linked to plaque initiation and destabilization,^{52,53} to microvascular flow dysfunction,⁵⁴ and to adverse outcomes in the setting of acute ischemia.⁵⁵ In contrast to CRP, IL-6 is highly upregulated at the site of coronary occlusion in patients with ST segment elevation myocardial infarction.⁵⁶ This latter observation is of particular interest because IL-6 (but not CRP) can be produced by cardiac myocytes under conditions of local hypoxia in the viable border zone of reperfused infarctions.⁵⁷ These data are consistent with the concept that downstream CRP synthesis is largely secondary to IL-6-induced stimulation.

Perhaps the most persuasive data suggesting a direct role for IL-6 signaling in atherosclerosis derives from Mendelian randomization studies that, again in contrast for those done earlier for CRP, do show evidence suggestive of causality. Broadly, Mendelian randomization studies take advantage of the random assortment of alleles that occurs at conception and then seeks to link specific genetic polymorphisms both to a measured intermediate phenotype (such as hsCRP) and to a defined clinical outcome (such as myocardial infarction or stroke). In elegant studies from 2 independent consortia that have used this strategy, polymorphism in the IL-6 signaling pathway at rs2228145 and rs7529229 was found to concordantly associate with lifetime lower levels of hsCRP, as well as lifetime lower levels of vascular risk^{58,59} (Figure 4). These data suggest that, on a genetic segregation basis, vascular risk varies widely because of heritable differences in IL-6 signaling. Because heritable differences in IL-6 signaling influence both hsCRP and rates of vascular events, we can more strongly infer a causal relationship between IL-6 and vascular disease on this basis. As noted, this positive upstream data for IL-6 signaling provides a counterpoint to earlier null Mendelian randomization studies of downstream hepatic acute phase reactants, including both CRP and fibrinogen.

Enthusiasm for IL-6 as a direct target for atheroprotection is tempered by counterbalancing issues. First, in the same meta-analysis indicating similar risk signals for IL-6 as for CRP, elevations of IL-18, tumor necrosis factor (TNF), matrix metalloproteinase 9 (MMP-9), and lipoprotein-associated

phospholipase A2 (Lp-PLA2) were also observed.⁴⁷ Thus, as with hsCRP, these data suggest that moving further upstream beyond IL-6 may be needed for anti-inflammatory approaches to atheroprotection. Second, because IL-6 functions primarily as a secondary signaling cytokine, it is uncertain whether direct inhibition of IL-6 would lead to desired effects on vascular disease or have the specificity needed for therapeutic use; as reviewed elsewhere, these concerns in part reflect distinctions between auto-inflammatory disorders (driven primarily by monocytes and macrophages) as compared with autoimmune disorders (driven primarily by T cells and adaptive immunity). Third, IL-1 levels largely drive IL-6 signaling. Yet, many of the drivers of IL-1 production through the NLRP3 inflammasome that are directly related to atherothrombosis do not on their own affect IL-6.

Despite these reservations, clinical trials of IL-6 inhibition with agents, such as tocilizumab (a humanized anti-IL-6 receptor antibody), are under serious consideration. Preliminary data from a single dose study of tocilizumab in non-ST elevation myocardial infarction showed this approach to reduce area under the CRP curve and to have a directionally similar effect on area under the troponin T curve, but this latter effect was not statistically significant⁶⁰ (ClinicalTrials.gov NCT01491074). The ENTRACTE study is an ongoing randomized open-label trial comparing tocilizumab to the TNF inhibitor etanercept on the rate of vascular events among patients with moderate to severe rheumatoid arthritis (ClinicalTrials.gov NCT01331837). In this study, rheumatoid arthritis patients aged ≥ 50 years with inadequate clinical response to at least one nonbiologic disease-modifying agent and a history of coronary disease are being followed prospectively for vascular events. Because all ENTRACTE participants have symptomatic rheumatoid arthritis and thus are in need of active anti-inflammatory therapy, there is no placebo group in this trial.

A further potential limitation of direct IL-6 inhibition is that this approach may upregulate apolipoprotein B, leading to an increase in LDLC. Initial tocilizumab studies in rheumatoid arthritis patients suggested that this effect was dose-dependent, potentially unrelated to inflammatory status, and thus a significant limiting factor in the development of IL-6 receptor blockade for atherosclerosis.^{61,62} However, whether this increase in LDL is more than a reverse acute phase effect remains controversial. Partially to address this issue, several surrogates of vascular risk were evaluated in the recent MEASURE trial evaluating IL-6 receptor blockade in rheumatoid arthritis.⁶³ In this study of 132 patients treated with tocilizumab or placebo for 24 weeks, total cholesterol, LDLC, and triglycerides increased by 12%, 28%, and 11%, respectively, among those allocated to tocilizumab. Yet, high-density lipoprotein-associated serum amyloid A content decreased with tocilizumab, and the apolipoprotein B to apolipoprotein A1 ratio remained stable over time. As such, an argument can be made that these changes may not be proatherogenic. Further, if putative changes in LDLC associated with IL-6 receptor blockade can be controlled with high-dose statin therapy, this approach may be viable. On the other hand, toxicity in terms of infection and potential reactivation of tuberculosis

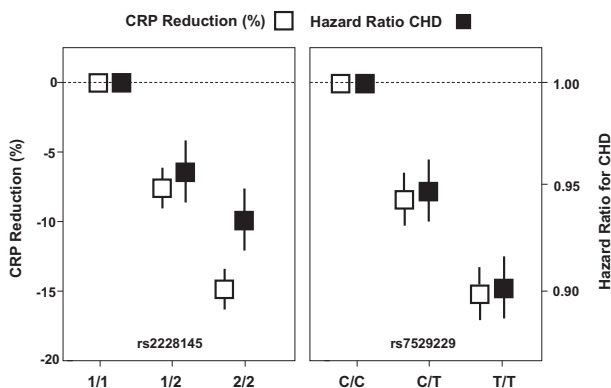


Figure 4. Mendelian randomization studies demonstrate that polymorphism in the interleukin-6 (IL-6) signaling pathway at rs2228145 and rs7529229 concordantly associate with both lifetime lower levels of high-sensitivity C-reactive protein (hsCRP) and lifetime lower risks of coronary heart disease. Adapted from Hingorani and Casas,⁵⁸ and Sarwar et al.⁵⁹

could reduce enthusiasm for agents, such as tocilizumab. As will be reviewed later, current clinical data do not suggest that these untoward effects are as prevalent in association with specific partial inhibition of IL-1.

Moving Fully Upstream to IL-1: Can a Causal Pathway be Proven and a Therapeutic Target Validated?

If CRP is conceived as a downstream biomarker and IL-6 as a secondary signaling cytokine, then it is not surprising that the upstream IL-1 signaling pathway has emerged as a major target for immune modulation and atherothrombotic protection. IL-1 is the apical proinflammatory mediator in both acute and chronic inflammation and among the most powerful inducers of innate immunity.^{64,65} IL-1 induces both its own production (an issue in several auto-inflammatory disorders), as well as the synthesis and expression of multiple secondary inflammatory mediators, including IL-6.

Two genetically coded proteins, IL-1 α and IL-1 β , bind to the type 1 IL-1 receptor. IL-1 α is largely membrane-bound and thus plays predominantly a local rather than systemic role. By contrast, IL-1 β is the primary circulating form of IL-1 but is produced as a precursor (pro-IL-1 β) that is cleaved following activation of the NLRP3 inflammasome by caspase-1 to produce the active cytokine under a variety of inflammatory stimuli.⁶⁶ As reviewed by Dinarello,⁶⁷ the active form of IL-1 β can result in autocrine, paracrine, and endocrine effects and, thus, is hypothesized to be involved in a broad spectrum of auto-inflammatory disorders in which monocyte-macrophage lines are the critical dysfunctional cells that promote pathologic inflammation.⁶⁴ This is an important distinction from classical auto-immune disorders in which T cells are the critical driver of the inflammatory response.

There is considerable genetic influence on IL-1 β production, and rare inherited disorders, such as Muckle Wells syndrome, cryopyrin-associated periodic syndrome, and neonatal-onset multisystem inflammatory disease, are associated with overproduction of IL-1 β . These disorders typically present with periodic fever, neutropenia, fatigue, myalgia, elevated CRP levels, and in severe cases with joint deformation and developmental disability.^{68,69} Importantly, because intervention with canakinumab (an anti-IL-1 β antibody), anakinra (an IL-1 receptor antagonist [IL-1Ra]), and riloncept (an IL-1 trap) all improve symptoms in these overproduction syndromes, it can be inferred that the critical culprit is IL-1 β rather than IL-1 α .^{64,70–72}

Because IL-1 β levels cannot be reliably measured in plasma, there are no comparable epidemiologic studies relating IL-1 β to cardiovascular risk as there are for hsCRP and IL-6. However, abundant experimental and pathologic data have long implicated IL-1 β in atherogenesis. Early work in the 1980s showed that IL-1 can induce leucocyte adhesion in vascular endothelial cells, lead to procoagulant activity, and serve as a mitogen for human vascular smooth muscle cell.^{73–75} In mouse knockout models, deficiency of IL-1 β is associated with reduced lesion formation.^{76,77} By contrast, in cholesterol-fed porcine models, exposure to exogenous IL-1 β increases intimal medial thickening.^{78,79} In humans, atherosclerotic lesions have been shown to contain IL-1 β ⁸⁰ and polymorphisms

in the IL-1Ra gene correlate with rates of restenosis and local atherosclerotic progression.^{81,82}

Equally important, multiple factors known to associate with atherosclerosis have recently been found to activate the crucial IL-1 β -producing NLRP3 inflammasome (Figure 5). In 2010, 2 groups demonstrated that cholesterol crystals can serve as endogenous danger signals that when engulfed by inflammatory monocytes can directly trigger the NLRP3 inflammasome; these data provide a critical linkage between cholesterol deposition and a systemic pro-inflammatory state.^{83,84} In 2013, Xiao et al reported that atheroprone oscillatory flow activates sterol regulatory element-binding protein 2 in endothelium and subsequently also induces the NLRP3 inflammasome.⁸⁵ In 2014, Folco et al reported that hypoxia potentiates IL-1 β expression in human macrophages, again suggesting a direct proinflammatory effect on atherogenesis secondary to NLRP3 activation.⁸⁶ Most recently, in mid-2015, Warnatsch et al reported that cholesterol crystals interact with neutrophils to trigger the release of neutrophil extracellular traps which prime macrophages to produce the precursor pro-IL-1 β .⁸⁷ Neutrophil extracellular traps comprise extracellular released DNA fibers that form net-like entities which bind bacteria and platelets and exert multiple cytotoxic effects. In the process of NETosis, neutrophils expel cytosolic and nuclear material, a suicidal act that can lead to acute thrombosis and is related to several proatherosclerotic processes.⁸⁸ Extracellular chromatin is injurious in ischemia reperfusion and correlates in man with the extent of underlying atherosclerosis.⁸⁹ In oncologic settings, cancer-associated NETosis is associated with increased deep vein thrombosis and pulmonary embolism. Diabetes mellitus, a major cardiovascular risk factor, has also been reported to prime neutrophils to undergo NETosis.⁹⁰

The central role played by the inflammasome has made inhibition of the IL-1 pathway an attractive theoretical target for atheroprotection,^{3,91,92} and several agents that target IL-1 activity are currently available (Table). In a phase II study of 182 patients with non-ST elevation acute coronary syndrome, Morton et al have shown that 14 days of treatment with the IL-1Ra anakinra significantly reduces the area under the CRP release curve, confirming that IL-1 drives CRP elevation during acute ischemia.⁹³ Similarly, 2 pilot studies performed by Abbate et al in ST-segment-elevation myocardial infarction reported that anakinra reduces the magnitude of ischemia-driven CRP release.^{94,95} However, anakinra leads to dual IL-1 α and IL-1 β inhibition, which may not be optimal for atheroprotection or provide the best safety balance between IL-1 activation and inhibition. In a Mendelian randomization study of the IL1RN gene (that encodes endogenous IL-1Ra), IL-1Ra raising alleles were associated with lower levels of IL-6 and CRP and reduced rates of rheumatoid arthritis, but also with an increase in myocardial infarction and abdominal aortic aneurysm.⁹⁶ Interpretation of this study is complex, however, because there was no genetic method to differentiate IL-1 α from IL-1 β activity.⁹⁷

In contrast to anakinra, canakinumab is a fully human monoclonal antibody targeting IL-1 β and thus provides a highly specific method to address whether IL-1 β inhibition can improve cardiovascular outcomes without alteration of IL-1 α . Canakinumab is an approved agent for the treatment

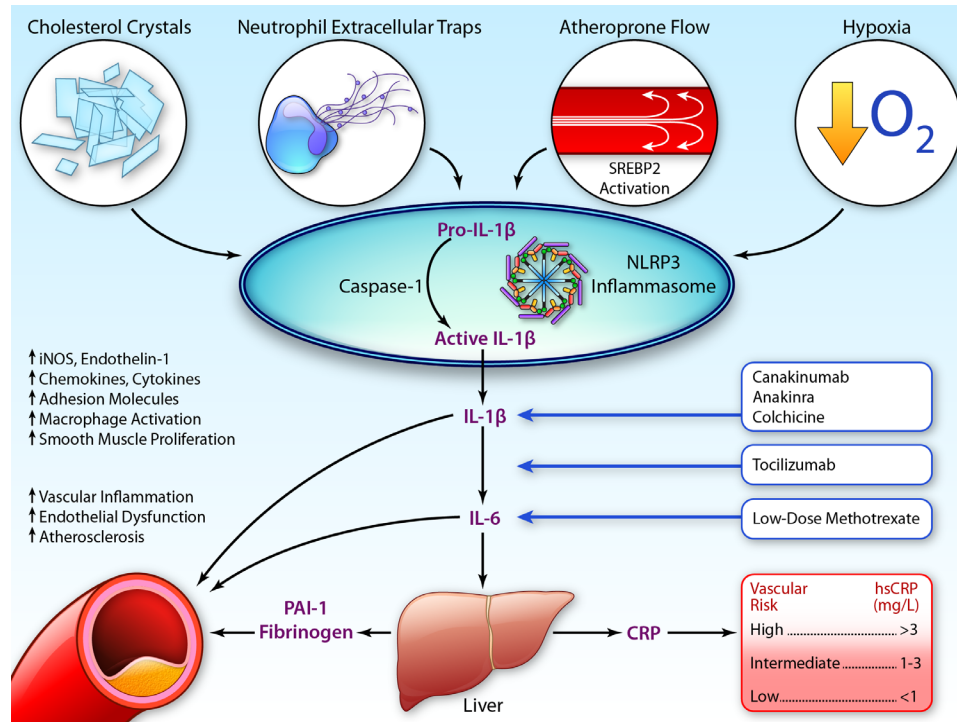


Figure 5. Activation of the NOD-like receptor family pyrin domain containing 3 (NLRP3) inflammasome by cholesterol crystals, neutrophil extracellular traps, hypoxia, and atheroprone flow result in production of pro-interleukin (IL)-1 β to IL-1 β with consequent downstream effects on IL-6 and C-reactive protein (CRP), as well as increased vascular atheroma. Potential interventions include canakinumab, anakinra, tocilizumab, methotrexate, and colchicine. iNOS indicates inducible nitric oxide synthase; PAI-1, plasminogen activator inhibitor-1; and SREBP2, sterol regulatory binding protein 2. (Illustration credit: Ben Smith.)

of Muckle Wells syndrome and cryopyrin-associated periodic syndrome and has also shown activity in the settings of diabetes mellitus and gout. In a phase IIb trial conducted among 556 diabetics with high vascular risk, canakinumab produced dose-dependent reductions exceeding 50% for IL-6 and CRP, as well as having a smaller effect on circulating fibrinogen (Figure 6).⁹⁸ In that trial, canakinumab had no effect on LDL or high-density lipoprotein, though a small increase in triglycerides was observed. Moreover, single doses of canakinumab were shown to inhibit inflammasome-mediated IL-1 β , IL-6, and CRP production for a period of several months, demonstrating that long-term inflammatory inhibition could be achieved if canakinumab was given only 3 to 4 times annually. This is important because chronic inhibition of inflammation may be crucial to atherosclerotic protection. Because canakinumab leaves IL-1 α function intact, this approach should have reduced

infectious risk when given long term; in contrast to IL-6 or TNF inhibitors, IL-1 β inhibition with canakinumab does not appear to reactivate tuberculosis nor cause increased infectious risk among those with HIV.

Partly on the basis of these phase II data, the large-scale Canakinumab Anti-Inflammatory Thrombosis Outcomes Study (CANTOS) was launched in 2011 to address whether IL-1 β inhibition with subcutaneous canakinumab every 3 months as compared with placebo can reduce recurrent cardiovascular event rates in stable coronary artery disease patients who remain at high inflammatory risk because of a persistent elevation of hsCRP.⁹⁹ Enrollment in CANTOS was limited to those with hsCRP >2 mg/L for 3 important reasons. First, absolute event rates are enhanced in the trial because the anticipated median hsCRP of the study group should be roughly 4 mg/L, despite treatment with an aggressive prevention regimen, including statins. Second, by prescreening for

Table. Characteristics of IL-1 Inhibitors

Name	Mechanism	Blockade			FDA Approval	Dose	Route	Frequency
		IL-1a	IL-1B	IL-1Ra				
Anakinra	Receptor antagonist	Yes	Yes	No	Rheumatoid Arthritis	100 mg	SC	Daily
Rinalcept	IL-1 trap	Yes	Yes	Yes	CAPS	160 mg	SC	Weekly
Canakinumab	IL-1b antibody	No	Yes	No	CAPS	150 mg	SC	3 Months
Gevokizumab	IL-1b antibody	No	Yes	No	...	0.3 mg/kg IV	Monthly	

CAPS indicates cryopyrin-associated periodic syndromes; IL-1Ra, IL-1 receptor antagonist. Adapted from Van Tassel et al⁶⁵ with permission of the publisher. Copyright ©2013, the American Heart Association.

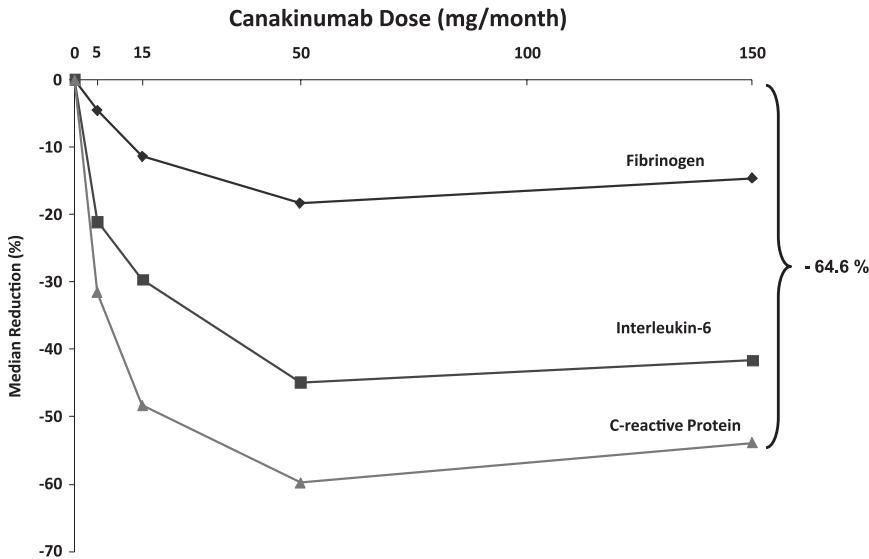


Figure 6. Dose-dependent effects of canakinumab at 4 months for C-reactive protein (CRP), interleukin-6 (IL-6), and fibrinogen among 556 diabetic patients at high risk for vascular disease. Adapted from Ridker et al⁹⁸ with permission of the publisher. Copyright ©2012, the American Heart Association.

elevated hsCRP, the trial protocol limits canakinumab exposure to those with inflammation, a step which should improve safety and tolerability. Third, as noted earlier, IL-1 β levels cannot reliably be measured in plasma. Thus, CANTOS trial is effectively using hsCRP as a surrogate for enhanced IL-1 β activity.

With 10065 post-myocardial infarction patients enrolled worldwide, CANTOS is an event-driven trial due to complete in 2017 when \approx 1400 cases of myocardial infarction, stroke, or cardiovascular death have accrued. The trial is testing 3 doses of canakinumab against placebo and is powered to detect a 20% relative risk reduction in hard cardiovascular events (Figure 7). Canakinumab directly inhibits the IL-1 β to IL-6 to CRP axis with no effect on LDLC; thus, CANTOS will be the first large-scale test of the inflammation hypothesis of atherothrombosis. Prior work with anakinra and canakinumab has shown modest effects on HbA1c through similar anti-inflammatory pathways. As diabetes mellitus is often considered an inflammatory disease,¹⁰⁰ rates of incident diabetes mellitus and progression of diabetes mellitus are critical secondary endpoints of the trial. Further, as canakinumab has been hypothesized to reduce metastatic disease in part through

alteration of adhesion molecule function, incident cancers are also being tracked closely¹⁰¹; this latter issue is collinear with interests in inhibition of IL-1 and innate immune function as a potential therapeutic tool in the oncology community.¹⁰² A logical extension of the CANTOS program will be to evaluate IL-1 β inhibition in the setting of acute ischemia; very recent data in mice parabiosis models have shown that IL-1 β contributes to bone marrow activation after acute myocardial infarction and that neutralizing IL-1 β with a murine analogue of canakinumab can inhibit this process in a manner favoring infarct healing.¹⁰³ Anticipated side effects from canakinumab include an increased risk of infection, and thus, any potential benefits on vascular events must exceed this potential hazard. Prespecified analyses within CANTOS include effect modification by on-treatment levels of IL-6 measured in fresh plasma.

In addition to CANTOS, the cardiovascular community is actively engaged in trials of alternative agents that impact the central CRP, IL-6, and IL-1 axis. As one example, the United States National Heart, Lung, and Blood Institute has funded a 7000-patient hard outcomes trial evaluating low-dose methotrexate (15–20 mg weekly) as compared

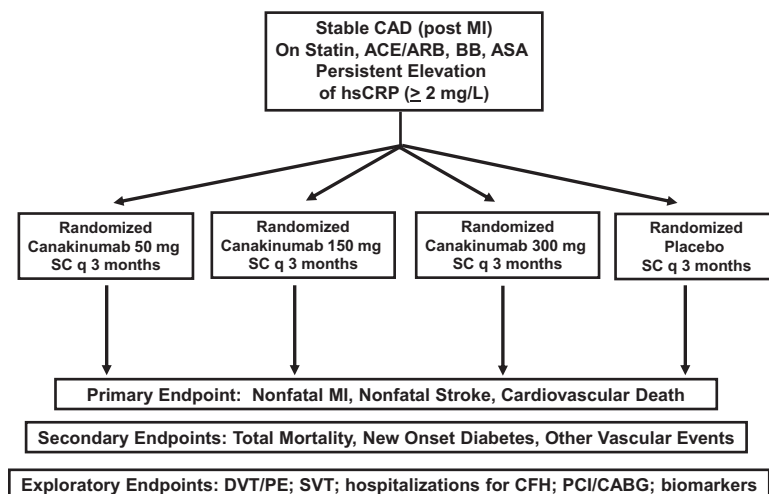


Figure 7. Design of the Canakinumab Anti-inflammatory Thrombosis Outcomes Study (CANTOS). ACE indicates angiotensin-converting enzyme; ARB, angiotensin II receptor blocker; ASA, aspirin; BB, beta-blocker; CHF, congestive heart failure; DVT/PE, deep vein thrombosis/pulmonary embolism; hsCRP, high-sensitivity C-reactive protein; MI, myocardial infarction; PCI-ABG, percutaneous coronary intervention/coronary artery bypass surgery; and SVT, supraventricular tachycardia. Adapted from Ridker et al⁹⁹ with permission of the publisher. Copyright ©2011, Elsevier.

with placebo in aggressively treated secondary prevention patients.¹⁰⁴ In observational studies, low-dose methotrexate is associated with reduced cardiovascular event rates among those with rheumatoid arthritis and psoriatic arthritis, and in animal models low-dose methotrexate has been shown to reduce lesion formation. As a second example, the anti-inflammatory agent colchicine (which primarily functions as a microtubule inhibitor) is also known to have effects on the NLRP3 inflammasome and can reduce IL-1 β expression.^{105,106} In a pilot study of those with ST elevation myocardial infarction, 5 days of colchicine reduced area under the creatine kinase-MB (CK-MB) curve and infarct size defined by late gadolinium enhancement using cardiac magnetic resonance imaging.¹⁰⁷ Most importantly, in an open-label randomized trial, colchicine was found to reduce cardiovascular event rates.¹⁰⁸ This provocative observation requires testing in formal double-blind settings.

Several outstanding recent reviews have addressed the basic immunology underlying atherothrombotic progression and the mechanisms of specific drug response.^{2,109–111} In concert with this work, the translational research community has come a long distance since studies in the mid-1990s first linked biomarkers of inflammation to future vascular risk. Close collaboration between clinical, epidemiologic, and bench investigators has now led to randomized outcome trials targeting the CRP, IL-6, and IL-1 pathway. If successful, these trials will close the loop on the inflammatory hypothesis of atherosclerosis and serve as examples of how fundamental biologic principles can be translated into personalized medical practice.

Sources of Funding

The work described in this article is supported by investigator-initiated research grants to Dr Ridker from Novartis and AstraZeneca; the Leducq Foundation, the American Heart Association, and the National Heart Lung and Blood Institute (HL101422-03).

Disclosures

Dr Ridker is listed as a co-inventor on patents held by the Brigham and Women's Hospital, Harvard Medical School, that relate to the use of inflammatory biomarkers in cardiovascular disease and diabetes that have been licensed to Seimens and AstraZeneca, and has received investigator-initiated research grant support from the National Heart Lung and Blood Institute, Novartis, Astra-Zeneca, the Doris Duke Charitable Foundation, the Leducq Foundation, and the Donald W Reynolds Foundation to perform work relevant to the topics discussed in this article.

References

- Libby P, Ridker PM, Hansson GK. Progress and challenges in translating the biology of atherosclerosis. *Nature*. 2011;473:317–325. doi: 10.1038/nature10146.
- Swirski FK, Nahrendorf M. Leukocyte behavior in atherosclerosis, myocardial infarction, and heart failure. *Science*. 2013;339:161–166. doi: 10.1126/science.1230719.
- Ridker PM, Lüscher TF. Anti-inflammatory therapies for cardiovascular disease. *Eur Heart J*. 2014;35:1782–1791. doi: 10.1093/eurheartj/ehu203.
- Tillett WS, Francis T. Serological reactions in pneumonia with a non-protein somatic fraction of pneumococcus. *J Exp Med*. 1930;52:561–571.
- Macleod CM, Avery OT. The occurrence during acute infections of a protein not normally present in the blood: II. Isolation and properties of the reactive protein. *J Exp Med*. 1941;73:183–190.
- McCarty M. The occurrence during acute infections of a protein not normally present in the blood: IV. Crystallization of the C-reactive protein. *J Exp Med*. 1947;85:491–498.
- Ridker PM. C-reactive protein: eighty years from discovery to emergence as a major risk marker for cardiovascular disease. *Clin Chem*. 2009;55:209–215. doi: 10.1373/clinchem.2008.119214.
- de Beer FC, Hind CR, Fox KM, Allan RM, Maseri A, Pepys MB. Measurement of serum C-reactive protein concentration in myocardial ischaemia and infarction. *Br Heart J*. 1982;47:239–243.
- Berk BC, Weintraub WS, Alexander RW. Elevation of C-reactive protein in “active” coronary artery disease. *Am J Cardiol*. 1990;65:168–172.
- Liuzzo G, Biasucci LM, Gallimore JR, Grillo RL, Rebuzzi AG, Pepys MB, Maseri A. The prognostic value of C-reactive protein and serum amyloid A protein in severe unstable angina. *N Engl J Med*. 1994;331:417–424. doi: 10.1056/NEJM199408183310701.
- Haverkate F, Thompson SG, Pyke SD, Gallimore JR, Pepys MB. Production of C-reactive protein and risk of coronary events in stable and unstable angina. European Concerted Action on Thrombosis and Disabilities Angina Pectoris Study Group. *Lancet*. 1997;349:462–466.
- Ridker PM, Cushman M, Stampfer MJ, Tracy RP, Hennekens CH. Inflammation, aspirin, and the risk of cardiovascular disease in apparently healthy men. *N Engl J Med*. 1997;336:973–979. doi: 10.1056/NEJM199704033361401.
- Ridker PM, Glynn RJ, Hennekens CH. C-reactive protein adds to the predictive value of total and HDL cholesterol in determining risk of first myocardial infarction. *Circulation*. 1998;97:2007–2011.
- Ridker PM, Cushman M, Stampfer MJ, Tracy RP, Hennekens CH. Plasma concentration of C-reactive protein and risk of developing peripheral vascular disease. *Circulation*. 1998;97:425–428.
- Casscells W, Hathorn B, David M, Krabach T, Vaughn WK, McAllister HA, Bearman G, Willerson JT. Thermal detection of cellular infiltrates in living atherosclerotic plaques: possible implications for plaque rupture and thrombosis. *Lancet*. 1996;347:1447–1451.
- Ridker PM, Hennekens CH, Buring JE, Rifai N. C-reactive protein and other markers of inflammation in the prediction of cardiovascular disease in women. *N Engl J Med*. 2000;342:836–843. doi: 10.1056/NEJM200003233421202.
- Kaptoge S, Di Angelantonio E, Lowe G, Pepys MB, Thompson SG, Collins R, Danesh J. C-reactive protein concentration and risk of coronary heart disease, stroke, and mortality: an individual participant meta-analysis. *Lancet*. 2010;375:132–140.
- Cook NR, Paynter NP, Eaton CB, Manson JE, Martin LW, Robinson JG, Rossouw JE, Wassertheil-Smolter S, Ridker PM. Comparison of the Framingham and Reynolds Risk scores for global cardiovascular risk prediction in the multiethnic Women's Health Initiative. *Circulation*. 2012;125:1748–1756. S1. doi: 10.1161/CIRCULATIONAHA.111.075929.
- DeFilippis AP, Young R, Carrubba CJ, McEvoy JW, Budoff MJ, Blumenthal RS, Kronmal RA, McClelland RL, Nasir K, Blaha MJ. An analysis of calibration and discrimination among multiple cardiovascular risk scores in a modern multiethnic cohort. *Ann Intern Med*. 2015;162:266–275. doi: 10.7326/M14-1281.
- Ridker PM, Rifai N, Pfeffer MA, Sacks FM, Moye LA, Goldman S, Flaker GC, Braunwald E. Inflammation, pravastatin, and the risk of coronary events after myocardial infarction in patients with average cholesterol levels. Cholesterol and Recurrent Events (CARE) Investigators. *Circulation*. 1998;98:839–844.
- Ridker PM, Rifai N, Clearfield M, Downs JR, Weis SE, Miles JS, Gotto AM Jr, Air Force/Texas Coronary Atherosclerosis Prevention Study Investigators. Measurement of C-reactive protein for the targeting of statin therapy in the primary prevention of acute coronary events. *N Engl J Med*. 2001;344:1959–1965. doi: 10.1056/NEJM200106283442601.
- Nissen SE, Tuzcu EM, Schoenhagen P, Crowe T, Sasiela WJ, Tsai J, Orazem J, Magorien RD, O'Shaughnessy C, Ganz P. Reversal of Atherosclerosis with Aggressive Lipid Lowering (REVERSAL) Investigators. Statin therapy, LDL cholesterol, C-reactive protein, and coronary artery disease. *N Engl J Med*. 2005;352:29–38. doi: 10.1056/NEJMoa042000.
- Ridker PM, Cannon CP, Morrow D, Rifai N, Rose LM, McCabe CH, Pfeffer MA, Braunwald E. Pravastatin or Atorvastatin Evaluation and Infection Therapy-Thrombolysis in Myocardial Infarction 22 (PROVE IT-TIMI 22) Investigators. C-reactive protein levels and outcomes after statin therapy. *N Engl J Med*. 2005;352:20–28. doi: 10.1056/NEJMoa042378.
- Morrow DA, de Lemos JA, Sabatine MS, Wiviott SD, Blazing MA, Shui A, Rifai N, Califf RM, Braunwald E. Clinical relevance of C-reactive protein during follow-up of patients with acute coronary syndromes in the

- Aggrastat-to-Zocor Trial. *Circulation*. 2006;114:281–288. doi: 10.1161/CIRCULATIONAHA.106.628909.
25. Ridker PM, Morrow DA, Rose LM, Rifai N, Cannon CP, Braunwald E. Relative efficacy of atorvastatin 80 mg and pravastatin 40 mg in achieving the dual goals of low-density lipoprotein cholesterol <70 mg/dl and C-reactive protein <2 mg/l: an analysis of the PROVE-IT TIMI-22 trial. *J Am Coll Cardiol*. 2005;45:1644–1648. doi: 10.1016/j.jacc.2005.02.080.
 26. Bohula EA, Giugliano RP, Cannon CP, Zhou J, Murphy SA, White JA, Tershakovec AM, Blazing MA, Braunwald E. Achievement of dual low-density lipoprotein cholesterol and high-sensitivity C-reactive protein targets more frequent with the addition of ezetimibe to simvastatin and associated with better outcomes in IMPROVE-IT. *Circulation*. 2015;132:1224–1233. doi: 10.1161/CIRCULATIONAHA.115.018381.
 27. Ridker PM, Danielson E, Fonseca FA, Genest J, Gotto AM Jr, Kastelein JJ, Koenig W, Libby P, Lorenzatti AJ, MacFadyen JG, Nordestgaard BG, Shepherd J, Willerson JT, Glynn RJ; JUPITER Study Group. Rosuvastatin to prevent vascular events in men and women with elevated C-reactive protein. *N Engl J Med*. 2008;359:2195–2207. doi: 10.1056/NEJMoa0807646.
 28. Ridker PM, Danielson E, Fonseca FA, Genest J, Gotto AM Jr, Kastelein JJ, Koenig W, Libby P, Lorenzatti AJ, MacFadyen JG, Nordestgaard BG, Shepherd J, Willerson JT, Glynn RJ; JUPITER Trial Study Group. Reduction in C-reactive protein and LDL cholesterol and cardiovascular event rates after initiation of rosuvastatin: a prospective study of the JUPITER trial. *Lancet*. 2009;373:1175–1182. doi: 10.1016/S0140-6736(09)60447-5.
 29. Calabró P, Willerson JT, Yeh ET. Inflammatory cytokines stimulated C-reactive protein production by human coronary artery smooth muscle cells. *Circulation*. 2003;108:1930–1932. doi: 10.1161/01.CIR.0000096055.62724.C5.
 30. Calabró P, Chang DW, Willerson JT, Yeh ET. Release of C-reactive protein in response to inflammatory cytokines by human adipocytes: linking obesity to vascular inflammation. *J Am Coll Cardiol*. 2005;46:1112–1113. doi: 10.1016/j.jacc.2005.06.017.
 31. Pasceri V, Willerson JT, Yeh ET. Direct proinflammatory effect of C-reactive protein on human endothelial cells. *Circulation*. 2000;102:2165–2168.
 32. Devaraj S, Xu DY, Jialal I. C-reactive protein increases plasminogen activator inhibitor-1 expression and activity in human aortic endothelial cells: implications for the metabolic syndrome and atherothrombosis. *Circulation*. 2003;107:398–404.
 33. Singh U, Devaraj S, Jialal I. C-reactive protein decreases tissue plasminogen activator activity in human aortic endothelial cells: evidence that C-reactive protein is a procoagulant. *Arterioscler Thromb Vasc Biol*. 2005;25:2216–2221. doi: 10.1161/01.ATV.0000183718.62409.ea.
 34. Venugopal SK, Devaraj S, Jialal I. C-reactive protein decreases prostacyclin release from human aortic endothelial cells. *Circulation*. 2003;108:1676–1678. doi: 10.1161/01.CIR.0000094736.10595.A1.
 35. Danenberg HD, Szalai AJ, Swaminathan RV, Peng L, Chen Z, Seifert P, Fay WP, Simon DI, Edelman ER. Increased thrombosis after arterial injury in human C-reactive protein-transgenic mice. *Circulation*. 2003;108:512–515. doi: 10.1161/01.CIR.0000085568.13915.1E.
 36. Paul A, Ko KW, Li L, Yechoor V, McCrory MA, Szalai AJ, Chan L. C-reactive protein accelerates the progression of atherosclerosis in apolipoprotein E-deficient mice. *Circulation*. 2004;109:647–655. doi: 10.1161/01.CIR.0000114526.50618.24.
 37. Trion A, de Maat MP, Jukema JW, van der Laarse A, Maas MC, Offerman EH, Havekes LM, Szalai AJ, Princen HM, Emeis JJ. No effect of C-reactive protein on early atherosclerosis development in apolipoprotein E*3-leiden/human C-reactive protein transgenic mice. *Arterioscler Thromb Vasc Biol*. 2005;25:1635–1640. doi: 10.1161/01.ATV.0000171992.36710.1e.
 38. Hirschfield GM, Gallimore JR, Kahan MC, Hutchinson WL, Sabin CA, Benson GM, Dhillon AP, Tennent GA, Pepys MB. Transgenic human C-reactive protein is not proatherogenic in apolipoprotein E-deficient mice. *Proc Natl Acad Sci U S A*. 2005;102:8309–8314. doi: 10.1073/pnas.0503202102.
 39. Bisoendial RJ, Boekholdt SM, Vergeer M, Stroes ES, Kastelein JJ. C-reactive protein is a mediator of cardiovascular disease. *Eur Heart J*. 2010;31:2087–2091. doi: 10.1093/eurheartj/ehq238.
 40. Anand SS, Yusuf S. C-reactive protein is a bystander of cardiovascular disease. *Eur Heart J*. 2010;31:2092–2096. doi: 10.1093/eurheartj/ehq242.
 41. Noveck R, Stroes ES, Flaim JD, Baker BF, Hughes S, Graham MJ, Crooke RM, Ridker PM. Effects of an antisense oligonucleotide inhibitor of C-reactive protein synthesis on the endotoxin challenge response in healthy human male volunteers. *J Am Heart Assoc*. 2014;3:e001084. doi: 10.1161/JAHA.114.001084.
 42. Lane T, Wassef N, Poole S, Mistry Y, Lachmann HJ, Gillmore JD, Hawkins PN, Pepys MB. Infusion of pharmaceutical-grade natural human C-reactive protein is not proinflammatory in healthy adult human volunteers. *Circ Res*. 2014;114:672–676. doi: 10.1161/CIRCRESAHA.114.302770.
 43. Elliott P, Chambers JC, Zhang W, et al. Genetic Loci associated with C-reactive protein levels and risk of coronary heart disease. *JAMA*. 2009;302:37–48. doi: 10.1001/jama.2009.954.
 44. Zacho J, Tybjaerg-Hansen A, Jensen JS, Grande P, Sillesen H, Nordestgaard BG. Genetically elevated C-reactive protein and ischemic vascular disease. *N Engl J Med*. 2008;359:1897–1908. doi: 10.1056/NEJMoa0707402.
 45. Ridker PM. A test in context: critical evaluation of high sensitivity C-reactive protein (hsCRP). *J Am Coll Cardiol*. 2015. In press.
 46. Ridker PM, Rifai N, Stampfer MJ, Hennekens CH. Plasma concentration of interleukin-6 and the risk of future myocardial infarction among apparently healthy men. *Circulation*. 2000;101:1767–1772.
 47. Kaptoge S, Seshasai SR, Gao P, Freitag DF, Butterworth AS, Borglykke A, Di Angelantonio E, Gudnason V, Rumley A, Lowe GD, Jørgensen T, Danesh J. Inflammatory cytokines and risk of coronary heart disease: new prospective study and updated meta-analysis. *Eur Heart J*. 2014;35:578–589. doi: 10.1093/eurheartj/ehq367.
 48. Esteve E, Castro A, López-Bermejo A, Vendrell J, Ricart W, Fernández-Real JM. Serum interleukin-6 correlates with endothelial dysfunction in healthy men independently of insulin sensitivity. *Diabetes Care*. 2007;30:939–945. doi: 10.2337/dc06-1793.
 49. Mahmud A, Feely J. Arterial stiffness is related to systemic inflammation in essential hypertension. *Hypertension*. 2005;46:1118–1122. doi: 10.1161/01.HYP.0000185463.27209.b0.
 50. Lee WY, Allison MA, Kim DJ, Song CH, Barrett-Connor E. Association of interleukin-6 and C-reactive protein with subclinical carotid atherosclerosis (the Rancho Bernardo Study). *Am J Cardiol*. 2007;99:99–102. doi: 10.1016/j.amjcard.2006.07.070.
 51. Pradhan AD, Manson JE, Rifai N, Buring JE, Ridker PM. C-reactive protein, interleukin 6, and risk of developing type 2 diabetes mellitus. *JAMA*. 2001;286:327–334.
 52. Yudkin JS, Kumari M, Humphries SE, Mohamed-Ali V. Inflammation, obesity, stress and coronary heart disease: is interleukin-6 the link? *Atherosclerosis*. 2000;148:209–214.
 53. Schieffler B, Selle T, Hilfiker A, Hilfiker-Kleiner D, Grote K, Tietge UJ, Trautwein C, Luchtefeld M, Schmittkamp C, Heeneman S, Daemen MJ, Drexler H. Impact of interleukin-6 on plaque development and morphology in experimental atherosclerosis. *Circulation*. 2004;110:3493–3500. doi: 10.1161/01.CIR.0000148135.08582.97.
 54. Guo F, Dong M, Ren F, Zhang C, Li J, Tao Z, Yang J, Li G. Association between local interleukin-6 levels and slow flow/microvascular dysfunction. *J Thromb Thrombolysis*. 2014;37:475–482. doi: 10.1007/s11239-013-0974-0.
 55. Lindmark E, Diderholm E, Wallentin L, Siegbahn A. Relationship between interleukin 6 and mortality in patients with unstable coronary artery disease: effects of an early invasive or noninvasive strategy. *JAMA*. 2001;286:2107–2113.
 56. Maier W, Altwegg LA, Corti R, Gay S, Hersberger M, Maly FE, Sütsch G, Roffi M, Neidhart M, Eberli FR, Tanner FC, Gobbi S, von Eckardstein A, Lüscher TF. Inflammatory markers at the site of ruptured plaque in acute myocardial infarction: locally increased interleukin-6 and serum amyloid A but decreased C-reactive protein. *Circulation*. 2005;111:1355–1361. doi: 10.1161/01.CIR.0000158479.58589.0A.
 57. Gwechenberger M, Mendoza LH, Youker KA, Frangogiannis NG, Smith CW, Michael LH, Entman ML. Cardiac myocytes produce interleukin-6 in culture and in viable border zone of reperfused infarctions. *Circulation*. 1999;99:546–551.
 58. Hingorani AD, Casas JP. The interleukin-6 receptor as a target for prevention of coronary heart disease: a mendelian randomisation analysis. *Lancet*. 2012;379:1214–1224.
 59. Sarwar N, Butterworth AS, Freitag DF, et al. Interleukin-6 receptor pathways in coronary heart disease: a collaborative meta-analysis of 82 studies. *Lancet*. 2012;379:1205–1213.
 60. Kleaveland O, Kunszt G, Bratlie M, Ueland T, Amundsen B, Aakhus S, Damaas JK, Aukrust P, Wiseth R, Gullestad L. The interleukin-6 receptor antagonist tocilizumab reduces inflammation and myocardial damage in non-ST elevation myocardial infarction - a randomized, double-blind, placebo controlled study. ESC Abstract, London, 2015.
 61. Kawashiri SY, Kawakami A, Yamasaki S, Imazato T, Iwamoto N, Fujikawa K, Aramaki T, Tamai M, Nakamura H, Ida H, Origuchi T, Ueki Y, Eguchi K. Effects of the anti-interleukin-6 receptor antibody, tocilizumab, on

- serum lipid levels in patients with rheumatoid arthritis. *Rheumatol Int*. 2011;31:451–456. doi: 10.1007/s00296-009-1303-y.
62. Strang AC, Bisoendial RJ, Kootte RS, Schulte DM, Dallinga-Thie GM, Levels JH, Kok M, Vos K, Tas SW, Tietge UJ, Müller N, Laudes M, Gerlag DM, Stroes ES, Tak PP. Pro-atherogenic lipid changes and decreased hepatic LDL receptor expression by tocilizumab in rheumatoid arthritis. *Atherosclerosis*. 2013;229:174–181. doi: 10.1016/j.atherosclerosis.2013.04.031.
 63. McInnes IB, Thompson L, Giles JT, Bathon JM, Salmon JE, Beaulieu AD, Codding CE, Carlson TH, Gilles C, Lee JS, Sattar N. Effect of interleukin-6 receptor blockade on surrogates of vascular risk in rheumatoid arthritis: MEASURE, a randomised, placebo-controlled study. *Ann Rheum Dis*. 2015;74:694–702. doi: 10.1136/annrheumdis-2013-204345.
 64. Dinarello CA. Interleukin-1 in the pathogenesis and treatment of inflammatory diseases. *Blood*. 2011;117:3720–3732. doi: 10.1182/blood-2010-07-273417.
 65. Van Tassel BW, Toldo S, Mezzaroma E, Abbate A. Targeting interleukin-1 in heart disease. *Circulation*. 2013;128:1910–1923. doi: 10.1161/CIRCULATIONAHA.113.003199.
 66. Agostini L, Martinon F, Burns K, McDermott MF, Hawkins PN, Tschopp J. NALP3 forms an IL-1 β -processing inflammasome with increased activity in Muckle-Wells autoinflammatory disorder. *Immunity*. 2004;20:319–325.
 67. Dinarello CA, Simon A, van der Meer JW. Treating inflammation by blocking interleukin-1 in a broad spectrum of diseases. *Nat Rev Drug Discov*. 2012;11:633–652. doi: 10.1038/nrd3800.
 68. Goldbach-Mansky R, Dailey NJ, Canna SW, et al. Neonatal-onset multi-system inflammatory disease responsive to interleukin-1 β inhibition. *N Engl J Med*. 2006;355:581–592. doi: 10.1056/NEJMoa055137.
 69. Hawkins PN, Lachmann HJ, Aganna E, McDermott MF. Spectrum of clinical features in Muckle-Wells syndrome and response to anakinra. *Arthritis Rheum*. 2004;50:607–612. doi: 10.1002/art.20033.
 70. Hoffman HM, Rosengren S, Boyle DL, Cho JY, Nayar J, Mueller JL, Anderson JP, Wanderer AA, Firestein GS. Prevention of cold-associated acute inflammation in familial cold autoinflammatory syndrome by interleukin-1 receptor antagonist. *Lancet*. 2004;364:1779–1785. doi: 10.1016/S0140-6736(04)17401-1.
 71. Hoffman HM, Throne ML, Amar NJ, Sebai M, Kivitz AJ, Kavanaugh A, Weinstein SP, Belomestnov P, Yancopoulos GD, Stahl N, Mellis SJ. Efficacy and safety of rilonacept (interleukin-1 Trap) in patients with cryopyrin-associated periodic syndromes: results from two sequential placebo-controlled studies. *Arthritis Rheum*. 2008;58:2443–2452. doi: 10.1002/art.23687.
 72. Lachmann HJ, Kone-Paut I, Kuemmerle-Deschner JB, Leslie KS, Hachulla E, Quartier P, Gitton X, Widmer A, Patel N, Hawkins PN; Canakinumab in CAPS Study Group. Use of canakinumab in the cryopyrin-associated periodic syndrome. *N Engl J Med*. 2009;360:2416–2425. doi: 10.1056/NEJMoa0810787.
 73. Bevilacqua MP, Pober JS, Majeau GR, Cotran RS, Gimbrone MA Jr. Interleukin 1 (IL-1) induces biosynthesis and cell surface expression of procoagulant activity in human vascular endothelial cells. *J Exp Med*. 1984;160:618–623.
 74. Bevilacqua MP, Pober JS, Wheeler ME, Cotran RS, Gimbrone MA Jr. Interleukin 1 acts on cultured human vascular endothelium to increase the adhesion of polymorphonuclear leukocytes, monocytes, and related leukocyte cell lines. *J Clin Invest*. 1985;76:2003–2011. doi: 10.1172/JCI112200.
 75. Libby P, Warner SJ, Friedman GB. Interleukin 1: a mitogen for human vascular smooth muscle cells that induces the release of growth-inhibitory prostanooids. *J Clin Invest*. 1988;81:487–498. doi: 10.1172/JCI113346.
 76. Kirii H, Niwa T, Yamada Y, Wada H, Saito K, Iwakura Y, Asano M, Moriaki H, Seishima M. Lack of interleukin-1 β decreases the severity of atherosclerosis in ApoE-deficient mice. *Arterioscler Thromb Vasc Biol*. 2003;23:656–660. doi: 10.1161/01.ATV.00000064374.15232.C3.
 77. Isoda K, Sawada S, Ishigami N, Matsuki T, Miyazaki K, Kusuhashi M, Iwakura Y, Ohsuzu F. Lack of interleukin-1 receptor antagonist modulates plaque composition in apolipoprotein E-deficient mice. *Arterioscler Thromb Vasc Biol*. 2004;24:1068–1073. doi: 10.1161/01.ATV.0000127025.48140.a3.
 78. Chamberlain J, Gunn J, Francis S, Holt C, Crossman D. Temporal and spatial distribution of interleukin-1 β in balloon injured porcine coronary arteries. *Cardiovasc Res*. 1999;44:156–165.
 79. Shimokawa H, Ito A, Fukumoto Y, Kadokami T, Nakaie R, Sakata M, Takayanagi T, Egashira K, Takeshita A. Chronic treatment with interleukin-1 β induces coronary intimal lesions and vasospastic responses in pigs in vivo. The role of platelet-derived growth factor. *J Clin Invest*. 1996;97:769–776. doi: 10.1172/JCI118476.
 80. Dewberry R, Holden H, Crossman D, Francis S. Interleukin-1 receptor antagonist expression in human endothelial cells and atherosclerosis. *Arterioscler Thromb Vasc Biol*. 2000;20:2394–2400.
 81. Kastrati A, Koch W, Berger PB, Mehilli J, Stephenson K, Neumann FJ, von Beckerath N, Böttiger C, Duff GW, Schömig A. Protective role against restenosis from an interleukin-1 receptor antagonist gene polymorphism in patients treated with coronary stenting. *J Am Coll Cardiol*. 2000;36:2168–2173.
 82. Francis SE, Camp NJ, Dewberry RM, Gunn J, Syrris P, Carter ND, Jeffery S, Kaski JC, Cumberland DC, Duff GW, Crossman DC. Interleukin-1 receptor antagonist gene polymorphism and coronary artery disease. *Circulation*. 1999;99:861–866.
 83. Duewell P, Kono H, Rayner KJ, et al. NLRP3 inflammasomes are required for atherogenesis and activated by cholesterol crystals. *Nature*. 2010;464:1357–1361. doi: 10.1038/nature08938.
 84. Rajamäki K, Lappalainen J, Öörni K, Välimäki E, Matikainen S, Kovanen PT, Eklund KK. Cholesterol crystals activate the NLRP3 inflammasome in human macrophages: a novel link between cholesterol metabolism and inflammation. *PLoS One*. 2010;5:e11765. doi: 10.1371/journal.pone.0011765.
 85. Xiao H, Lu M, Lin TY, et al. Sterol regulatory element binding protein 2 activation of NLRP3 inflammasome in endothelium mediates hemodynamic-induced atherosclerosis susceptibility. *Circulation*. 2013;128:632–642. doi: 10.1161/CIRCULATIONAHA.113.002714.
 86. Folco EJ, Sukhova GK, Quillard T, Libby P. Moderate hypoxia potentiates interleukin-1 β production in activated human macrophages. *Circ Res*. 2014;115:875–883. doi: 10.1161/CIRCRESAHA.115.304437.
 87. Warnatsch A, Ioannou M, Wang Q, Papayannopoulos V. Inflammation. Neutrophil extracellular traps license macrophages for cytokine production in atherosclerosis. *Science*. 2015;349:316–320. doi: 10.1126/science.aaa8064.
 88. Nahrendorf M, Swirski FK. Immunology. Neutrophil-macrophage communication in inflammation and atherosclerosis. *Science*. 2015;349:237–238. doi: 10.1126/science.aac7801.
 89. Borisoff JJ, Joosen IA, Versteilen MO, Brill A, Fuchs TA, Savchenko AS, Gallant M, Martinod K, Ten Cate H, Hofstra L, Crijns HJ, Wagner DD, Kietselaer BL. Elevated levels of circulating DNA and chromatin are independently associated with severe coronary atherosclerosis and a pro-thrombotic state. *Arterioscler Thromb Vasc Biol*. 2013;33:2032–2040. doi: 10.1161/ATVBAHA.113.301627.
 90. Wong SL, Demers M, Martinod K, Gallant M, Wang Y, Goldfine AB, Kahn CR, Wagner DD. Diabetes primes neutrophils to undergo NETosis, which impairs wound healing. *Nat Med*. 2015;21:815–819. doi: 10.1038/nm.3887.
 91. Fearon WF, Fearon DT. Inflammation and cardiovascular disease: role of the interleukin-1 receptor antagonist. *Circulation*. 2008;117:2577–2579. doi: 10.1161/CIRCULATIONAHA.108.772491.
 92. Abbate A, Dinarello CA. Anti-inflammatory therapies in acute coronary syndromes: is IL-1 blockade a solution? *Eur Heart J*. 2015;36:337–339. doi: 10.1093/eurheartj/ehu369.
 93. Morton AC, Rothman AM, Greenwood JP, Gunn J, Chase A, Clarke B, Hall AS, Fox K, Foley C, Banya W, Wang D, Flather MD, Crossman DC. The effect of interleukin-1 receptor antagonist therapy on markers of inflammation in non-ST elevation acute coronary syndromes: the MRC-ILA Heart Study. *Eur Heart J*. 2015;36:377–384. doi: 10.1093/eurheartj/ehu272.
 94. Abbate A, Kontos MC, Grizzard JD, Biondi-Zoccai GG, Van Tassel BW, Robati R, Roach LM, Arena RA, Roberts CS, Varma A, Gelwix CC, Salloum FN, Hastillo A, Dinarello CA, Vetrovec GW; VCU-ART Investigators. Interleukin-1 blockade with anakinra to prevent adverse cardiac remodeling after acute myocardial infarction (Virginia Commonwealth University Anakinra Remodeling Trial [VCU-ART] Pilot study). *Am J Cardiol*. 2010;105:1371–1377.e1. doi: 10.1016/j.amjcard.2009.12.059.
 95. Abbate A, Van Tassel BW, Biondi-Zoccai G, et al. Effects of interleukin-1 blockade with anakinra on adverse cardiac remodeling and heart failure after acute myocardial infarction [from the Virginia Commonwealth University-Anakinra Remodeling Trial (2) (VCU-ART2) pilot study]. *Am J Cardiol*. 2013;111:1394–1400. doi: 10.1016/j.amjcard.2013.01.287.
 96. The Interleukin 1 Genetics Consortium. Cardiometabolic effects of genetic upregulation of the interleukin 1 receptor antagonist: a Mendelian randomisation analysis. *Lancet Diabetes Endocrinol* 2015;3:243–253.

97. Herder C, Donath MY. Interleukin-1 receptor antagonist: friend or foe to the heart? *Lancet Diabetes Endocrinol*. 2015;3:228–229. doi: 10.1016/S2213-8587(15)00035-2.
98. Ridker PM, Howard CP, Walter V, Everett B, Libby P, Hensen J, Thuren T; CANTOS Pilot Investigative Group. Effects of interleukin-1 β inhibition with canakinumab on hemoglobin A1c, lipids, C-reactive protein, interleukin-6, and fibrinogen: a phase IIb randomized, placebo-controlled trial. *Circulation*. 2012;126:2739–2748. doi: 10.1161/CIRCULATIONAHA.112.122556.
99. Ridker PM, Thuren T, Zalewski A, Libby P. Interleukin-1 β inhibition and the prevention of recurrent cardiovascular events: rationale and design of the Canakinumab Anti-inflammatory Thrombosis Outcomes Study (CANTOS). *Am Heart J*. 2011;162:597–605. doi: 10.1016/j.ahj.2011.06.012.
100. Donath MY, Shoelson SE. Type 2 diabetes as an inflammatory disease. *Nat Rev Immunol*. 2011;11:98–107. doi: 10.1038/nri2925.
101. Dinarello CA. Why not treat human cancer with interleukin-1 blockade? *Cancer Metastasis Rev*. 2010;29:317–329. doi: 10.1007/s10555-010-9229-0.
102. Balkwill FR, Mantovani A. Cancer-related inflammation: common themes and therapeutic opportunities. *Semin Cancer Biol*. 2012;22:33–40. doi: 10.1016/j.semcancer.2011.12.005.
103. Sager HB, Heidt T, Hulsmans M, Dutta P, Courties G, Sebas M, Wojtkiewicz GR, Tricot B, Iwamoto Y, Sun Y, Weissleder R, Libby P, Swirski FK, Nahrendorf M. Targeting interleukin-1 β reduces leukocyte production after acute myocardial infarction. *Circulation*. 2015;132:1880–1890. doi: 10.1161/CIRCULATIONAHA.115.016160.
104. Everett BM, Pradhan AD, Solomon DH, Paynter N, Macfadyen J, Zaharris E, Gupta M, Clearfield M, Libby P, Hasan AA, Glynn RJ, Ridker PM. Rationale and Design of the Cardiovascular Inflammation Reduction Trial: a test of the inflammatory hypothesis of atherothrombosis. *Am Heart J*. 2013;166:199–207.e15. doi: 10.1016/j.ahj.2013.03.018.
105. Martinon F, Pétrilli V, Mayor A, Tardivel A, Tschopp J. Gout-associated uric acid crystals activate the NALP3 inflammasome. *Nature*. 2006;440:237–241. doi: 10.1038/nature04516.
106. Martínez GJ, Robertson S, Barraclough J, Xia Q, Mallat Z, Bursill C, Celermajer DS, Patel S. Colchicine acutely suppresses local cardiac production of inflammatory cytokines in patients with an acute coronary syndrome. *J Am Heart Assoc*. 2015;4:e002128. doi: 10.1161/JAHA.115.002128.
107. Devereux S, Giannopoulos G, Angelidis C, Alexopoulos N, Filippatos G, Papoutsidakis N, Sianos G, Goudevenos J, Alexopoulos D, Pyrgakis V, Cleman MW, Manolis AS, Tousoulis D, Lekakis J. Anti-inflammatory treatment with Colchicine in acute myocardial infarction: A Pilot Study. *Circulation*. 2015;132:1395–1403. doi: 10.1161/CIRCULATIONAHA.115.017611.
108. Nidorf SM, Eikelboom JW, Budgeon CA, Thompson PL. Low-dose colchicine for secondary prevention of cardiovascular disease. *J Am Coll Cardiol*. 2013;61:404–410. doi: 10.1016/j.jacc.2012.10.027.
109. Engelmann B, Massberg S. Thrombosis as an intravascular effector of innate immunity. *Nat Rev Immunol*. 2013;13:34–45. doi: 10.1038/nri3345.
110. Frangogiannis NG. The inflammatory response in myocardial injury, repair, and remodeling. *Nat Rev Cardiol*. 2014;11:255–265. doi: 10.1038/nrcardio.2014.28.
111. Hilgendorf I, Swirski FK, Robbins CS. Monocyte fate in atherosclerosis. *Arterioscler Thromb Vasc Biol*. 2015;35:272–279. doi: 10.1161/ATVBAHA.114.303565.

Circulation Research

JOURNAL OF THE AMERICAN HEART ASSOCIATION



From C-Reactive Protein to Interleukin-6 to Interleukin-1: Moving Upstream To Identify Novel Targets for Atheroprotection

Paul M Ridker

Circ Res. 2016;118:145-156

doi: 10.1161/CIRCRESAHA.115.306656

Circulation Research is published by the American Heart Association, 7272 Greenville Avenue, Dallas, TX 75231

Copyright © 2016 American Heart Association, Inc. All rights reserved.

Print ISSN: 0009-7330. Online ISSN: 1524-4571

The online version of this article, along with updated information and services, is located on the World Wide Web at:

<http://circres.ahajournals.org/content/118/1/145>

Permissions: Requests for permissions to reproduce figures, tables, or portions of articles originally published in *Circulation Research* can be obtained via RightsLink, a service of the Copyright Clearance Center, not the Editorial Office. Once the online version of the published article for which permission is being requested is located, click Request Permissions in the middle column of the Web page under Services. Further information about this process is available in the [Permissions and Rights Question and Answer](#) document.

Reprints: Information about reprints can be found online at:
<http://www.lww.com/reprints>

Subscriptions: Information about subscribing to *Circulation Research* is online at:
<http://circres.ahajournals.org/subscriptions/>